

**Te Toki Voyaging Trust
PRESENTS**

Nga Tai o Waiti

**Saturday 10th September 2022
Waikato River
Grantham St Boat Ramp**

**Short Course- 6.5km
Long Course- 14km**

Juniors-Golden Masters

tetokiwakaama@gmail.com for all queries

Nga Tai o Waiti

WHEN: Saturday 10th September 2022

WHERE: Waikato River , Grantham St, Boat Ramp

DISTANCE: 6.5km & 14km

RACE COURSE:

Waka will launch at Grantham St Boat Ramp and make their way down the Waikato River towards Ngāruawāhia. The start line is at the Grantham St Boat Ramp and we will have orange buoys in place.

The start Line will be 2x orange buoys across the river, crews will paddle up river and will be directed to turn and make a line before reaching the start line.



Caution

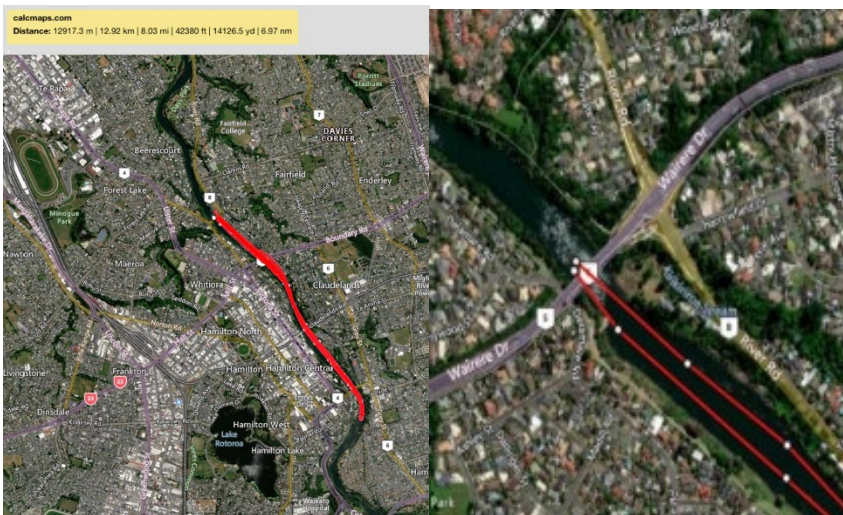
- under the first bridge there is a channel marker, shallow waters to the left of this going down river, and to the right of this heading up river
- high river levels and increased floating debris
- shallow patch in one section of the long course (outlined in race maps)

6.5km

The short course will head down river from the start line approximately 3km and make an ama turn around the left pillar of Fairfield Bridge (fourth bridge going down stream). Once turned you will return up river back to the starting line keeping to your right hand side of the river.



14km



The long course has the same start position as the short course race, waka will travel down stream to Pukete Bridge approximately 7km down river (5th bridge) and make an ama side turn around an orange marker buoy located just through the bridge. Once turned, you will return upriver keeping to your right, there will be one section where you will be required to cross over to the left hand side of the river for a short period and return to the right due to shallow waters. After this section you will remain to your right hand side of the river passing Fairfield bridge and the other 3 bridges making a finish back through the start line buoys at the boaty ramp.

WHERE IS GRANTHAM ST BOAT RAMP? Grantham St Boat Ramp is in the middle of Hamilton City, it is down a one way road. If you head into town and towards the Hamilton City Museum there is a road to the left. Follow this road all the way down and on your left past the rowing club you will see the Boat Ramp. Parking in the Boat Ramp carpark is limited to Waka towing vehicles only, therefore here is a list of places you can park:

- Tisdall Street
- Radnor Street
- Museum Carpark (May need to pay)

RACE SCHEDULE:

7:30-8am: Registrations & Waka Checks

8:15am: Race One Debrief

9:00am: Race One: Short Course 6.5km

9:45am: Race Two Debrief

10:30am: Race Two: Long Course 14km

HOW DO I ENTER AND HOW MUCH? Entries are done online via Waka Ama NZ's online

Short Course 6.5km- \$10 per paddler

Long Course 14km- \$15 per paddler

Both races- \$20 per paddler

Please deposit the funds for each crew into the Te Toki Voyaging Trust Account listed below along with your club name and division as a reference.

TTVT

12-3122-0176411-00

PRIZE GIVING: There will be a prize giving at the end of each of the division races, we also invite all crew to the running club for a shower and a kai will be available for paddlers.